

WLAN installation only

1 Preparation of the Connect-Box

Connect the Connect-Box with the Control Unit and then with the power supply. Or restart the Connect-Box by disconnecting and reconnecting the power supply. Also switch on the Control Unit.

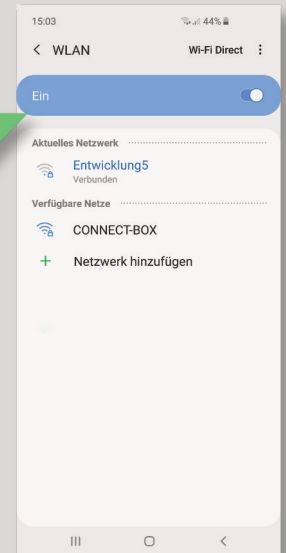


For LAN connections, you can go directly to **7**

2 Connection with the Connect-Box

Connect to the WLAN **"CONNECT-BOX"**. It can take up to 1 min to be displayed.

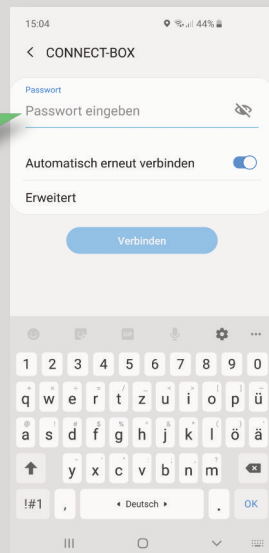
The installation of the „Connect-Box“ is only possible for 3 minutes after the WLAN is displayed.



3 Enter password

Enter the password: **11111111** for access to the Connect-Box

The „Connect-Box“ W-LAN is **NOT** connected to the internet! Ignore warnings!



4 Connect Connect-Box to WLAN

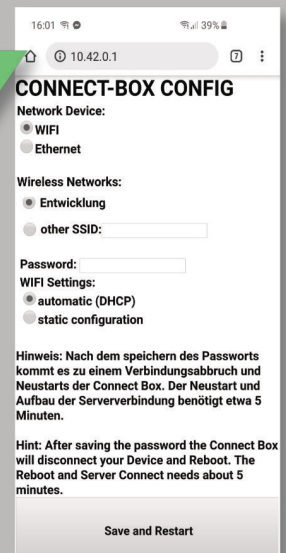
Open the internet browser on your smartphone or tablet



enter

http://10.42.0.1

into the address bar

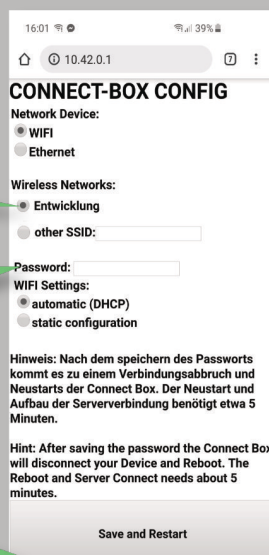


5 Select W-LAN and enter password

Select your W-LAN.

Enter your own W-LAN password.

Push "Save & Restart"



6 Acoustic signals and their meaning

1 x beep: settings saved
(if you don't hear the beep, start with step 1)



2 x beeps: WLAN connected
(if you don't hear the beeps, start with step 1)



3 x beeps: internet connected
(if you don't hear the beeps, start with step 1, this can take up to 5 min)
This beep sounds in LAN & WLAN operation.



The configuration of your „Connect-Box“ is now complete. Reconnect to your home WLAN. The connection to the Connect-Box is no longer needed.

LAN & WLAN installation

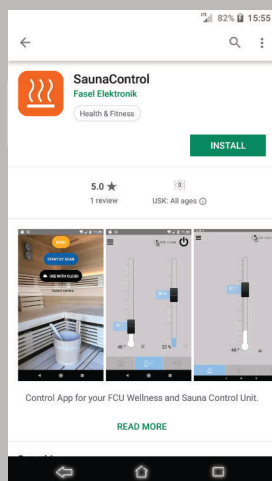
In both cases, the control unit must have beeped 3x, otherwise the Connect Box is not connected to the Internet.

7 Download the App

Install the "SaunaControl" App.

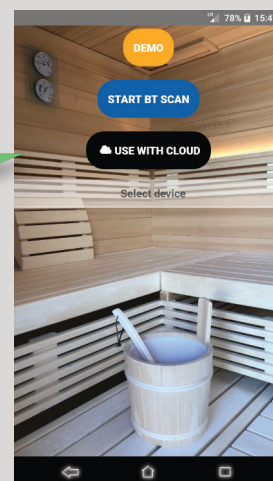


The App is available for download via Google Play Store and Apple App Store.



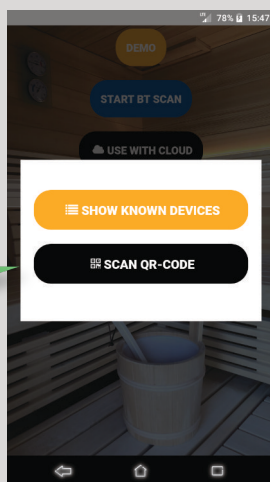
8 Mit Cloud verbinden

Open the App and select "USE WITH CLOUD".



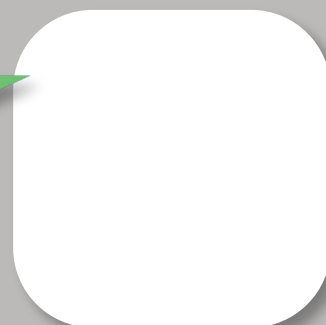
9 QR-Code scannen

Select "SCAN QR-CODE".



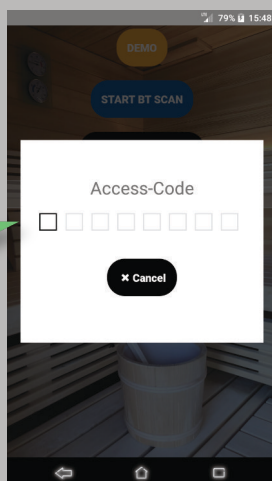
10 QR-Code

Scan this QR-Code with your smartphone or tablet



11 Zugangscode eingeben

Enter the 8 digit access code. You find the code on a separate document.



12 Pin vergeben

Enter the default PIN „0000“. Choose your own 4-digit PIN-Code. Please remember your PIN-code! It can be reset only on a sauna control unit with an control panel or by a service engineer!

